

NILSSON ENERGY

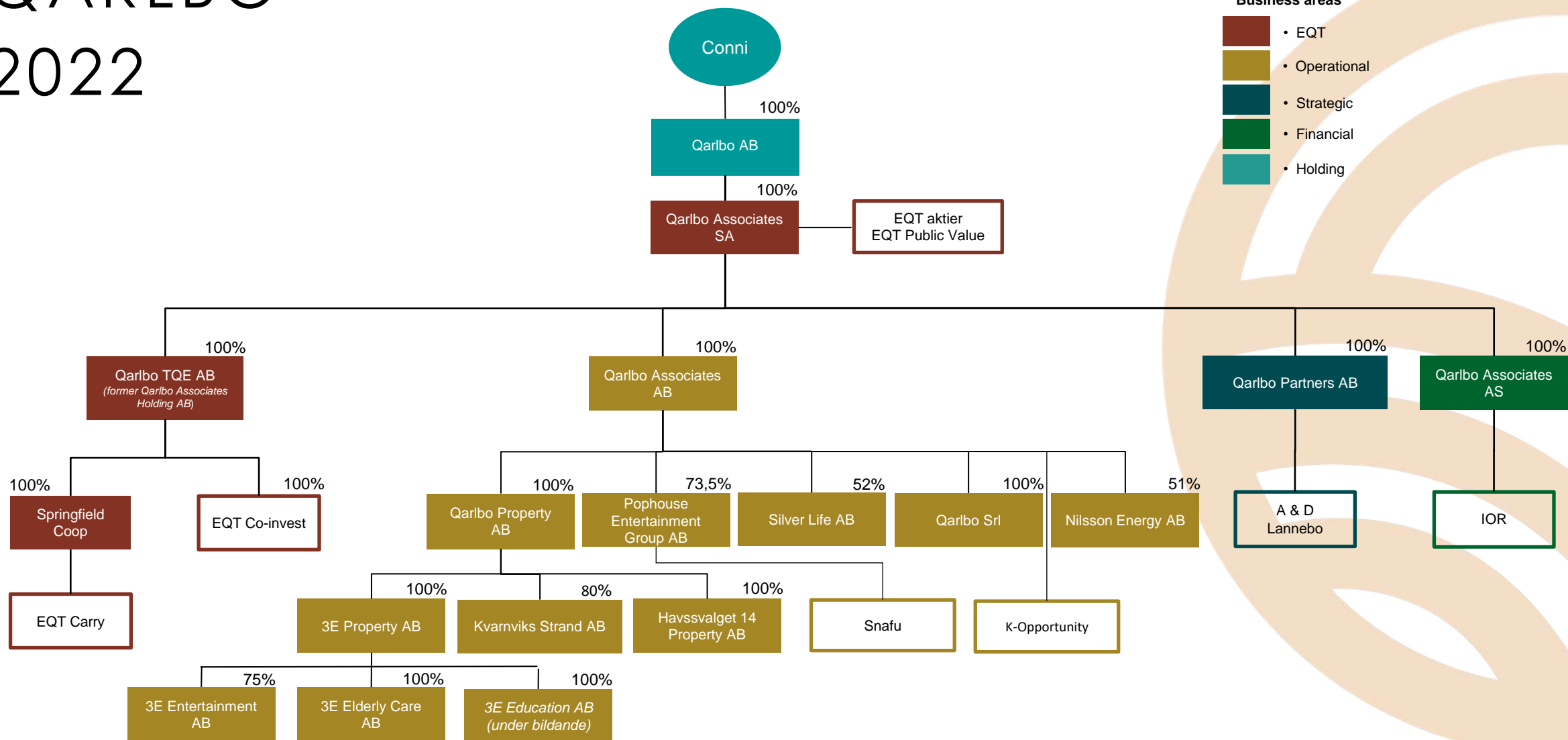
The image features a central globe with a grid overlay, set against a dark background. To the left, a wireframe wind turbine is visible. To the right, there are wireframe solar panels and a small house-like structure, all connected by glowing blue lines and lightning bolts, suggesting a global energy network. The text 'NILSSON ENERGY' is prominently displayed in the center in a bold, white, sans-serif font.



NILSSON ENERGY IN BRIEF

- Privately owned SME
- International pioneering position – proven turnkey deliveries
- Strategic Partnerships, key suppliers – no exclusivity – open for input
- Proud Member of WiGH
- EU Clean Hydrogen Alliance, CEO Roundtables
- Board Swedish Hydrogen Association

QARLBO 2022



Business areas

- EQT
- Operational
- Strategic
- Financial
- Holding



IDENTITY

BASED IN
SWEDEN

SCALING FOR
THE WORLD



ASSEMBLY PLANT – GATEWAY SÄVE

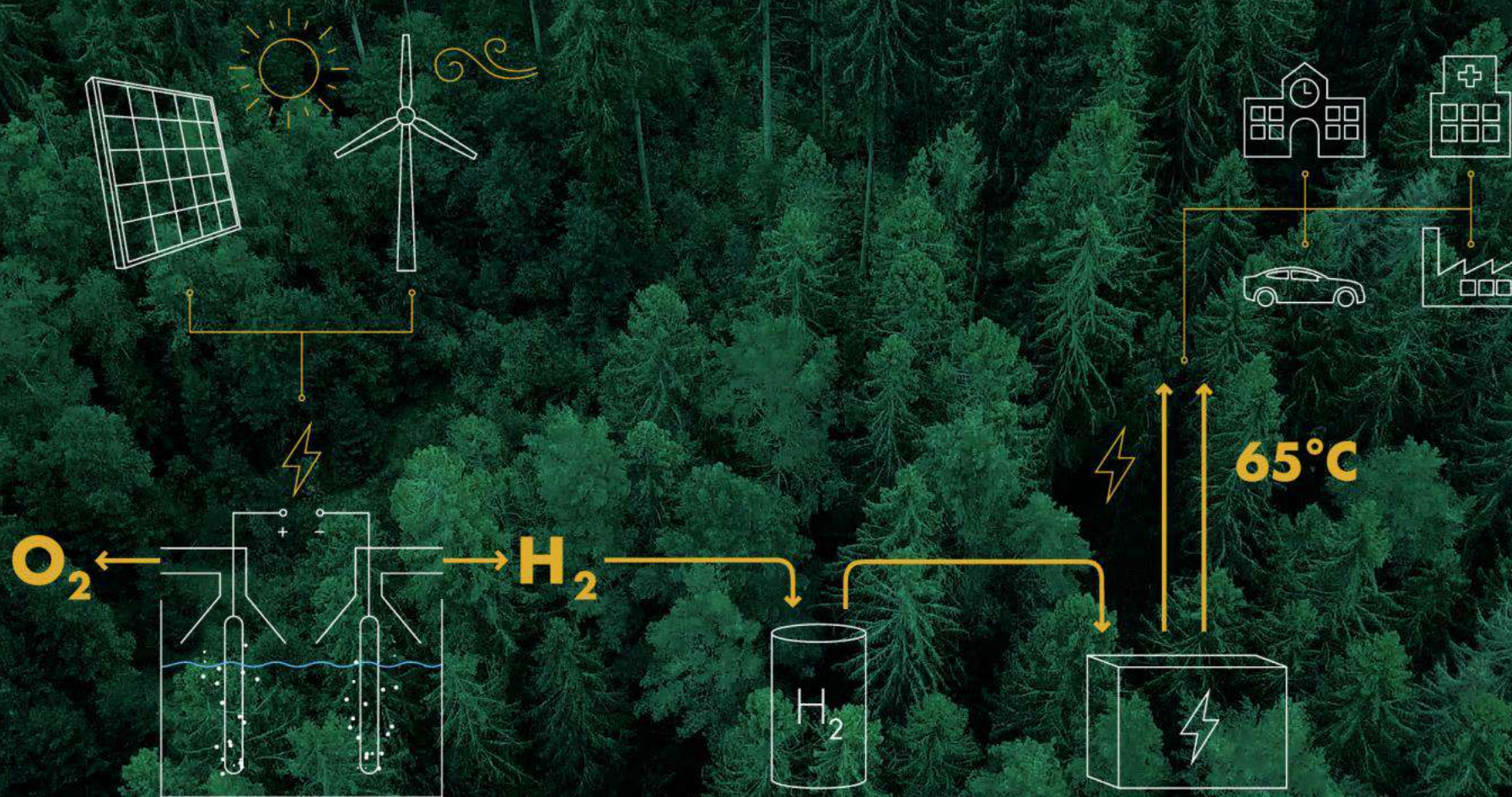


OFF-GRID LIVING-LAB EST. 2015



HQ – THE HYDROGEN DOME

TO STORE RENEWABLE ENERGY UNTIL IT IS NEEDED.



THIS MAKES US UNIQUE!

SELF-DEVELOPED SOFTWARE AND
HARDWARE FOR STEERING,
OPTIMIZATION & RISK
MANAGEMENT MAKE A TAILOR-
MADE COMBINATION OF
TECHNOLOGY DELIVER;

DECENTRALIZED & EMISSION FREE
ENERGY, HEAT & MOBILITY



A PIONEERING SOLAR POWERED LIVING-LAB

EST. 2015



USING A HYDROGEN BASED SYSTEM.



THE FIRST OFF-GRID & PUBLIC GREEN HYDROGEN STATION IN THE WORLD

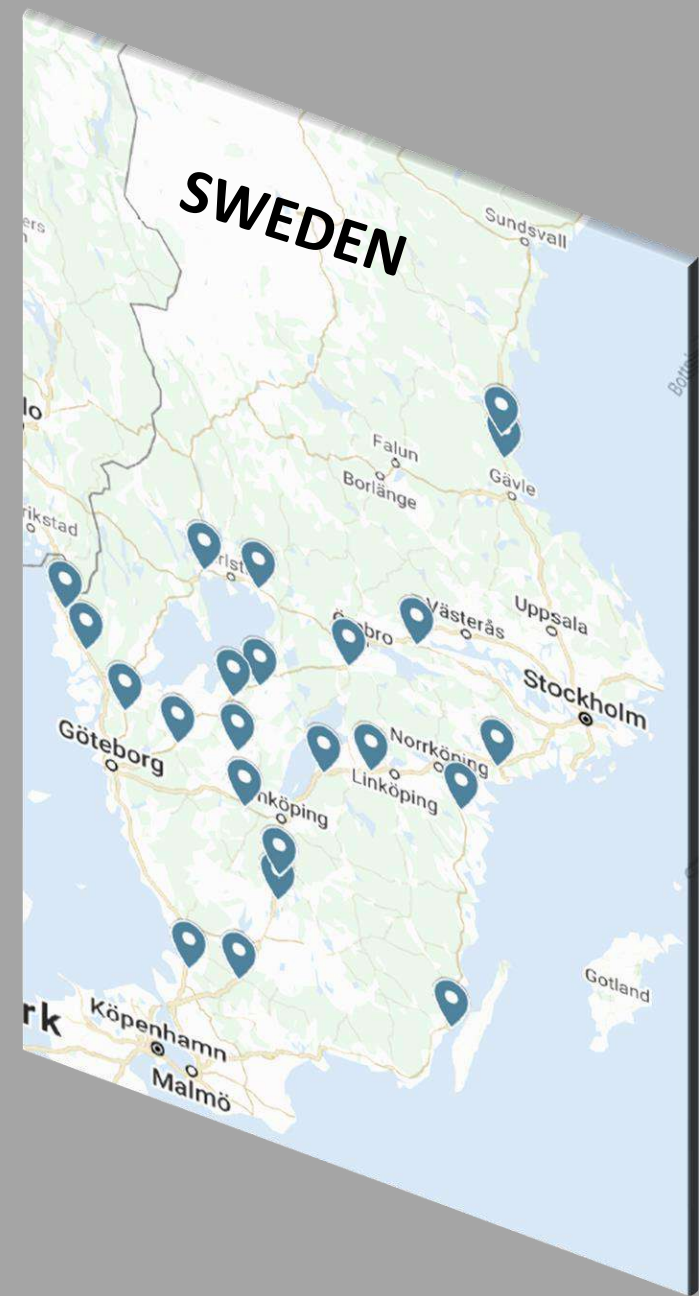




REH₂

23 H2 refueling
stations at
RASTA truck-stops

BUILD, OPERATE, SERVICE



THE FIRST EMISSION FREE SELF CONTAINED SCHOOL



Decentralized H2 in buildings - RePower Europe

"We must become independent from Russian oil, coal and gas..."

Commission President, Ursula von der Leyen

"It is time we tackle our vulnerabilities and rapidly become more independent in our energy choices. Let's dash into renewable energy at lightning speed..."

Frans Timmermans, Executive Vice-President for the European Green Deal



Way past the pilot phase!

One example of tech-solution:

Onsite electrolysis from solar, compression, batteries for short-term and green H2 for long-term storage, heat pumps. On-grid to offer flexibility, capable to be off-grid.

Investment: 1,5 MEuro for decades of safe energy provision.

Thresholds: Experience to be shared

Many decentralized nodes

- as relevant as large-scale projects not least in the speed at which they can be delivered.

NEW GREEN JOBS!

SCALING UP SOLUTIONS

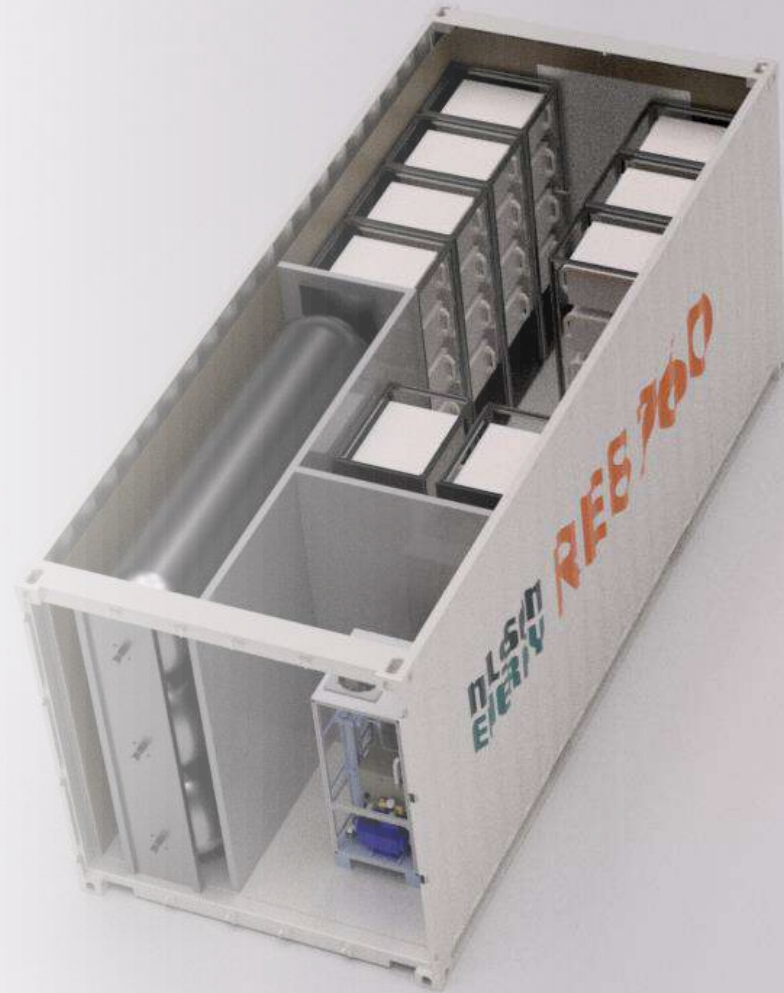
CYBER SECURITY

**NILSSON
ENERGY**

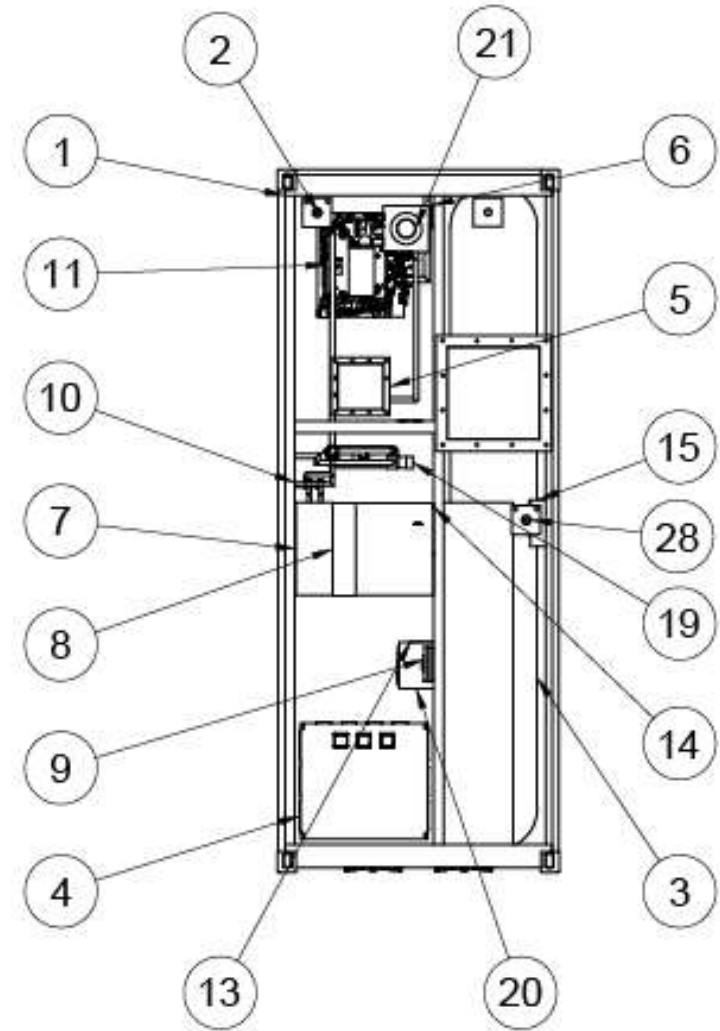
**A RAPIDLY GROWING
ENERGY COMPANY
BASED ON HYDROGEN**



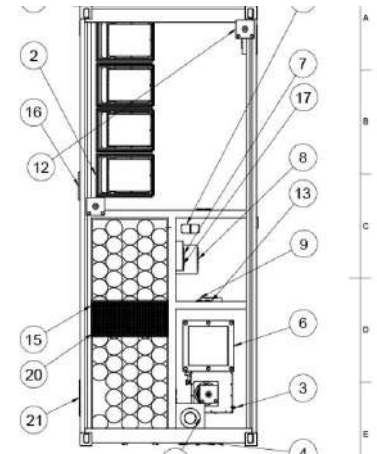
“POWERBOXES”
-FULL VALUE CHAIN



THE CALL FOR EUROPEAN UP-SCALING



PARTNERSHIPS





MOVING FORWARD





**ACTION SPEAKS
LOUDER THAN WORDS**

NILSSON ENERGY

The image features a central globe with a grid overlay, set against a dark background. To the left, a wireframe wind turbine is visible. To the right, there are wireframe solar panels and a small house-like structure, all connected by glowing blue lines and lightning bolts, suggesting a global energy network.



CONTACT:

Martina Wettin (M.Sc.)

Co-Founder, Nilsson Energy

martina@nilssonenergy.com

+46 736 187404